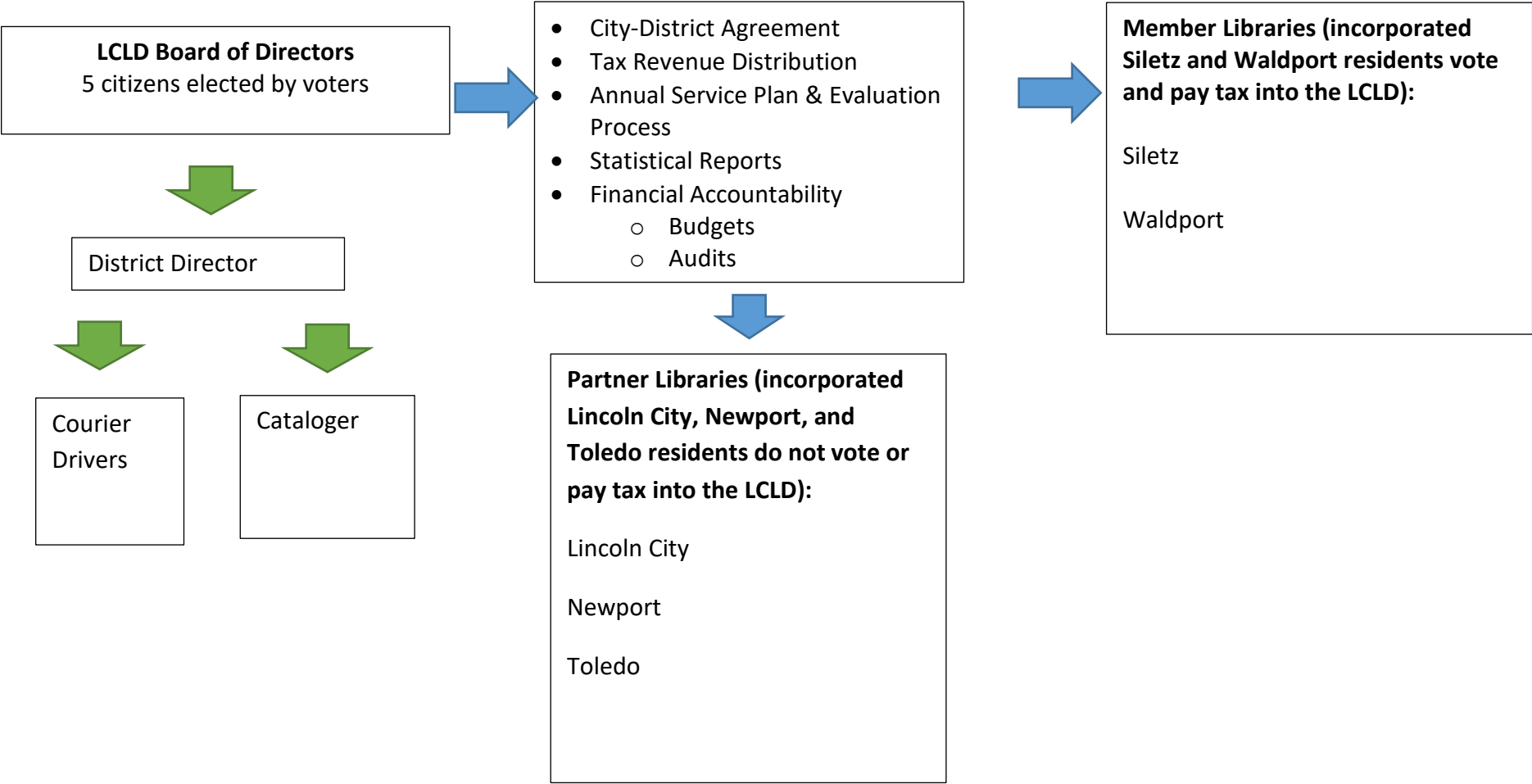


Appendix C: Lincoln County Library District (LCLD) Organizational Governance Structure

The LCLD was established to provide library services district-wide. Currently, this is accomplished through inter-governmental agreements with 5 cities: 2 members and three partners, to provide library service to everyone within the LCLD boundaries.



MAJOR ROLES AND RESPONSIBILITIES:

Library District Board of Directors

- Operates according to the governing ORS statutes
- Oversees distribution of approved tax-payer funds that ensure the provision of public library services in the Lincoln County Library District
- Sets the District budget each year
- Oversees Agreements with cities
- Sets District policies
- Develops and implements District strategic plans
- Hires District Director and staff

District Director

- Provides expertise, leadership and coordination
- Advises District Board regarding policy, resource allocation and strategic planning
- Prepares and manages District budget
- Administers District operations
- Monitors and evaluates District activities
- Supervises and evaluates District staff
- Serves as District Board Secretary

Cities

- Adopts local library policies
- Hires local library director
- Prepares/adopts annual public library budget in coordination with the library director
- Fiscally supports local public library
- Provides and maintains the public library building

- Oversees compliance with the requirements of the LCLD Agreement
- Supports and advocates for libraries and LCLD

Library Boards

- Serves as library policy advisors
- Supports and advocates for libraries and LCLD
- Carries out duties as stated in Oregon State law/City ordinance and School District policy regarding library boards
- Monitors compliance with the requirements of the LCLD Agreement

Local Library Director

- Provides expertise, leadership and coordination
- Advises library board regarding policy, resource allocation and strategic planning
- Prepares and manages library budget
- Administers local library operations
- Monitors and evaluates library performance
- Hires and supervises library staff
- Oversees coordination with local library support groups
- Ensures compliance with the requirements of the LCLD Agreement
- Collaborates with the LCLD to provide the best public library service to the residents of the District
- Supports and advocates for libraries and the LCLD